

BALDOR® • RELIANCE

Product Information Packet

KARCHER NORTH AMERICA

35U075L138G1

2HP,3470RPM,1PH,60HZ,56C,3540LC,OPEN,F2

Part Detail							
Revision:	D	Status:	PRD/A	Change #:		Proprietary:	Yes
Type:	AC	Prod. Type:	3540LC	Elec. Spec:	35WGL138	CD Diagram:	CD0320
Enclosure:	OPEN	Mfg Plant:		Mech. Spec:	35U075	Layout:	35LYU075
Frame:	56C	Mounting:	F2	Poles:	02	Created Date:	10-13-2014
Base:	RG	Rotation:	R	Insulation:	F	Eff. Date:	07-02-2015
Leads:	6#16,1#14 #4TH					Replaced By:	
Literature:		Elec. Diagram:					

Nameplate NP3273L							
CAT.NO.							
SPEC.	35U075L138G1						
HP	2						
VOLTS	115/230						
AMP	15.6/7.8						
RPM	3470						
FRAME	56C	HZ	60	PH	1		
SER.F.	1.15	CODE	G	DES	L	CL	F
F.L. AVG. EFF.	82.9	PF	99				
RATING	40C AMB-CONT						
CC		USABLE AT 208V					
DE	6205	ODE	6203				
ENCL	OPEN	SN					
	010002						

Parts List		
Part Number	Description	Quantity
SA290758	SA 35U075L138G1	1.000 EA
RA276914	RA 35U075L138G1	1.000 EA
OC3070C09	AEROVOX #Z24P247OM22A1 OIL CAP 70MFD/240	1.000 EA
TPCRJ38CBSP	THERMAL 1PH 1.0 MAN 120C	1.000 EA
EC1645B06	ELEC CAP 165V 2.0 X 4.3	1.000 EA
WD3006A01	RSS-2-103JT 2W 10K RES. METAL OXIDE 5%	1.000 EA
TP5059	GENERIC THERMAL KIT	1.000 EA
51XB1016A07	10-16 X 7/16 HXWSSLD SERTYB	3.000 EA
HA6003A28	CAPAC. CLAMP MODEL 36 MOTORS PLATED	1.000 EA
51XW0832A07	8-32 X .44, TAPTITE II, HEX WSHR SLTD SE	1.000 EA
11XW1032G06	10-32 X .38, TAPTITE II, HEX WSHR SLTD U	1.000 EA
35EP3201A71P	FREP, MACH, PAINT/PRIME	1.000 EA
51XW0832A07	8-32 X .44, TAPTITE II, HEX WSHR SLTD SE	2.000 EA
HW5100A03SP	WAVY WASHER (W1543-017)	1.000 EA
35EP3400A13	STD FACE MTD END PLATE OPEN NEMA 56C 05	1.000 EA
35AD2000	AIR BAFFLE	1.000 EA
60XW0632A06	6-32 X 3/8 TORX HEAD SCREW TAPTITE II	4.000 EA
51XN1032A20	10-32 X 1 1/4 HX WS SL SR	2.000 EA
35FH4500A11	DRIPCOVER(W/ AUTOPHERETIC PRIMER)	1.000 EA
51XN1032A20	10-32 X 1 1/4 HX WS SL SR	3.000 EA
HA2001A12	SPACER, .218 ID X .844 LG	3.000 EA
36CB4505	CONDUIT BOX LID, STAMPED	1.000 EA
36GS3006	GASKET, CAP BOX LID	1.000 EA
51XW0832A07	8-32 X .44, TAPTITE II, HEX WSHR SLTD SE	4.000 EA

Parts List (continued)		
Part Number	Description	Quantity
HW2501D13SP	KEY, 3/16 SQ X 1.375	1.000 EA
HA7000A04	KEY RETAINER 0.625 DIA SHAFTS	1.000 EA
85XU0407S04	4X1/4 U DRIVE PIN STAINLESS	2.000 EA
36CB3802B41	CPBX 36 W/1.09 DIA LEAD @ 12	1.000 EA
SP1006A01	TERM. BOARD, MODE 35 SW X H-23655	1.000 EA
MJ1000A75	GREASE, POLYREX EM EXXON (USe 4824-15A)	0.050 LB
HW3001B01	BRASS CUP WASHER, FOR #8 SCREW	1.000 EA
MG1000Y03	MUNSELL 2.53Y 6.70/ 4.60, GLOSS 20,	0.017 GA
SP5181A36	MODEL 35 LC TORQ STAT SWITCH LEAD ASSY	1.000 EA
HA3100A24	THRUBOLT 10-32 X 10.625	4.000 EA
LB1119N	WARNING LABEL	1.000 EA
MN416A01	TAG-INSTAL-MAINT no wire (1200/bx) 11/14	1.000 EA
LB1087	LABEL,MANUAL RESET (ROLL LABEL)	1.000 EA
LC0269	1PH,DV,REV,THERMAL,7 LD,L.AMP THRU HTR H	1.000 EA
NP3273L	ALUM SUPER-E THERMALLY PROTECTED	1.000 EA
36PA1001	PKG GRP, PRINT PK1017A06	1.000 EA
LB1417	LABEL CARTON 6X4 PERFORATED BLANK ROLLS	1.000 EA

AC Induction Motor Performance Data

Record # 48775 - Typical performance - not guaranteed values

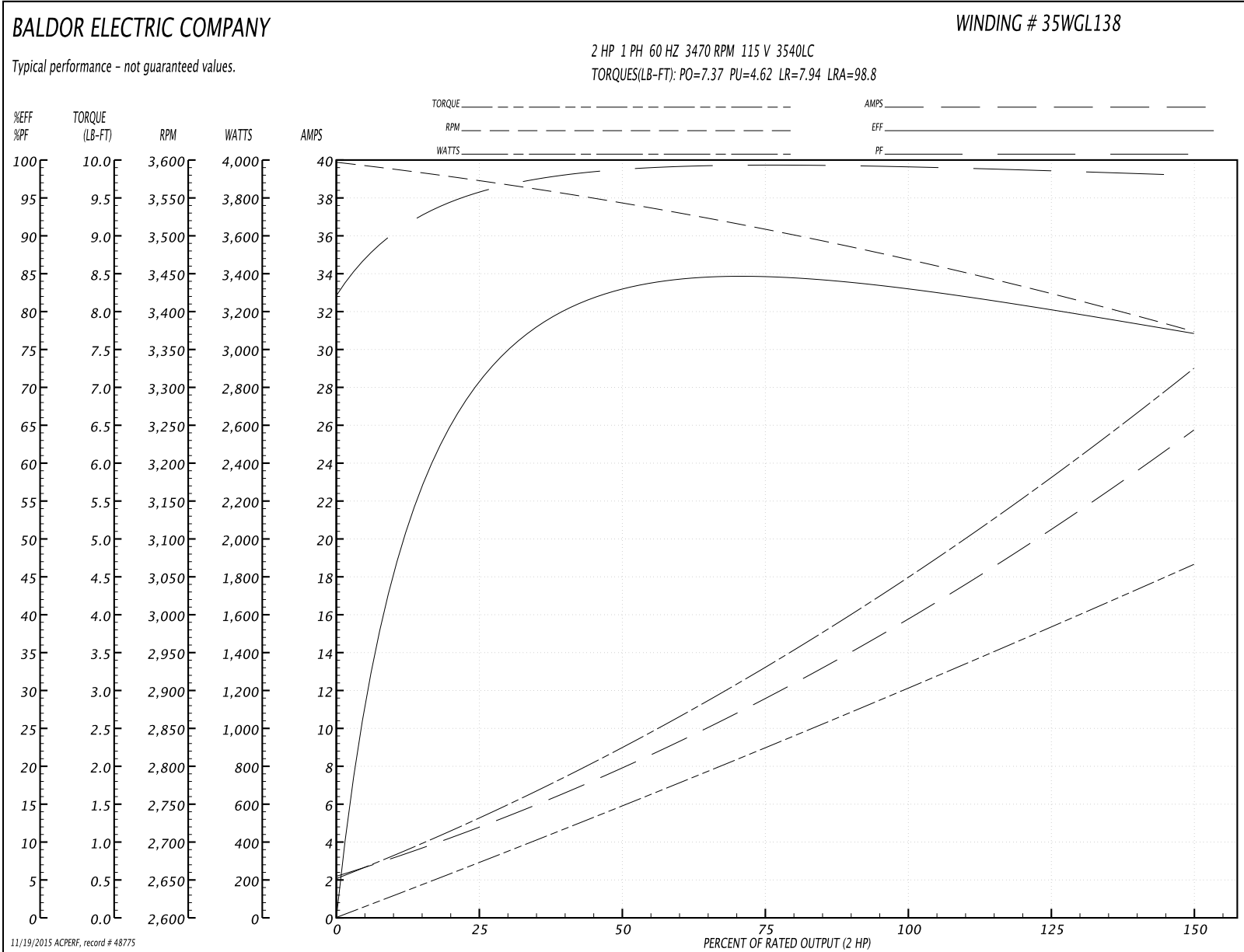
Winding: 35WGL138-R002	Type: 3540LC	Enclosure: OPEN
-------------------------------	---------------------	------------------------

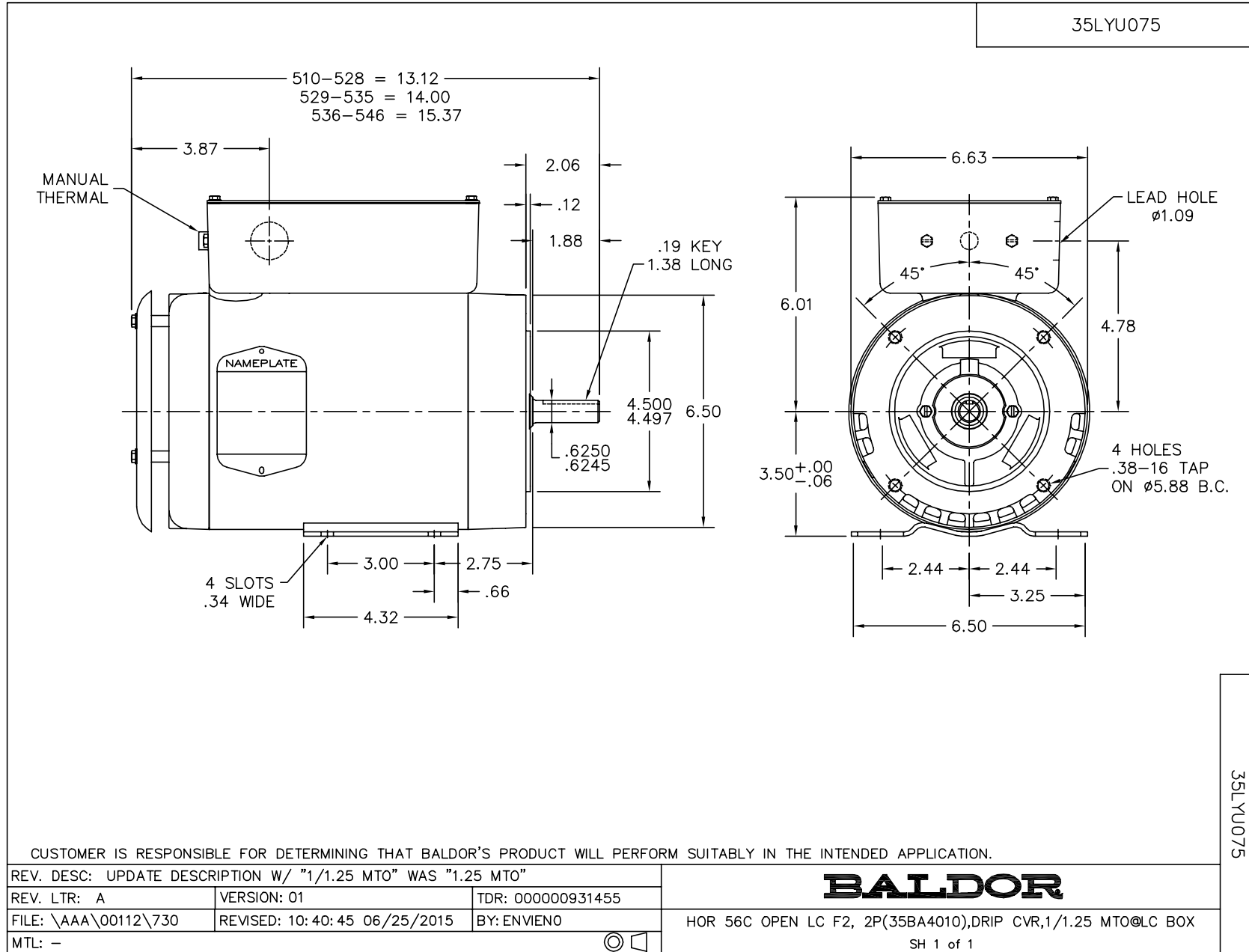
Nameplate Data				115 V, 60 Hz: Low Voltage Connection	
Rated Output (HP)	2			Full Load Torque	3.02 LB-FT
Volts	115/230			Start Configuration	direct on line
Full Load Amps	15.6/7.8			Breakdown Torque	7.37 LB-FT
R.P.M.	3470			Pull-up Torque	4.62 LB-FT
Hz	60	Phase	1	Locked-rotor Torque	7.94 LB-FT
NEMA Design Code	L	KVA Code	G	Starting Current	98.8 A
Service Factor (S.F.)	1.15			No-load Current	2.21 A
NEMA Nom. Eff.	82.9	Power Factor	99	Line-line Res. @ 25°C	0.28842 Ω A Ph 0.56941 Ω B Ph
Rating - Duty	40C AMB-CONT			Temp. Rise @ Rated Load	25°C
S.F. Amps				Temp. Rise @ S.F. Load	33°C

Load Characteristics 115 V, 60 Hz, 2 HP

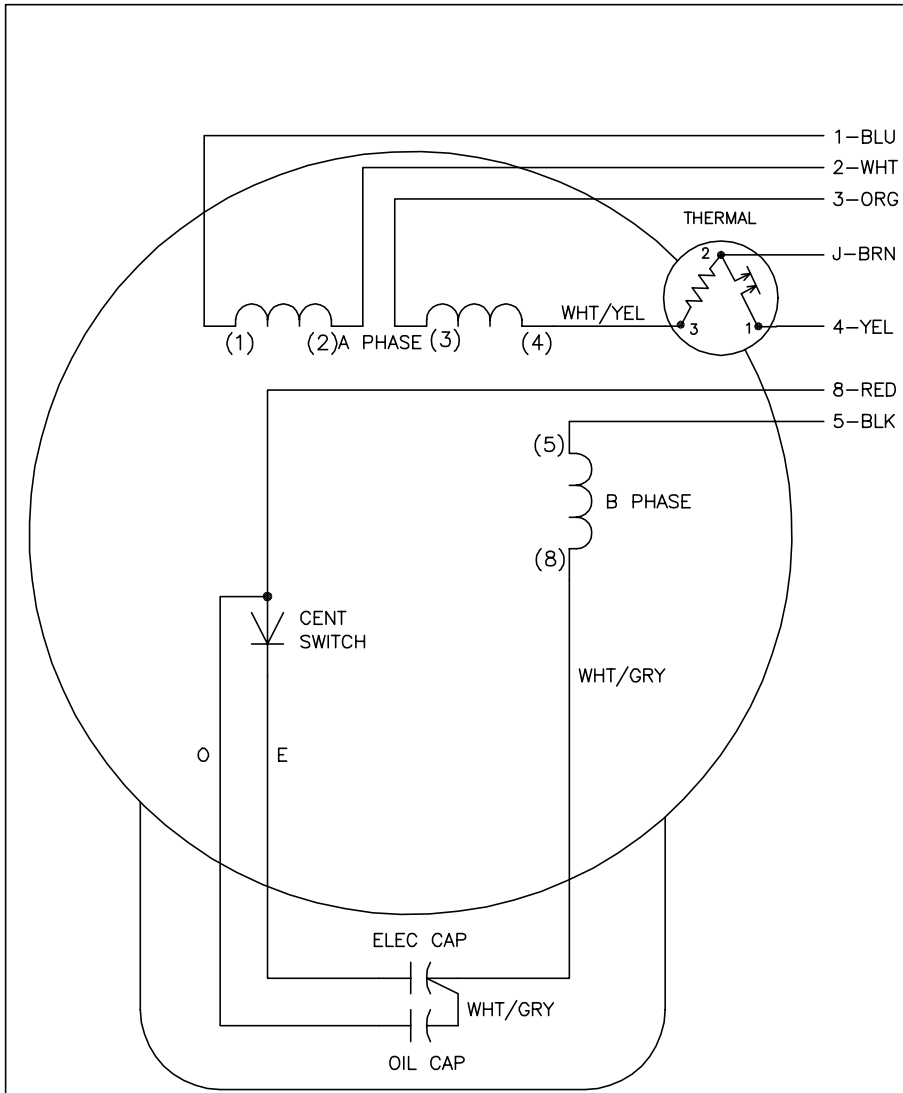
% of Rated Load	25	50	75	100	125	150	S.F.
Power Factor	97	100	100	99	99	98	99
Efficiency	71.3	82	84.1	83.5	80.6	76.8	81.8
Speed	3570.3	3542.6	3508.2	3472.2	3424.1	3372.2	3443
Line amperes	4.73	7.91	11.7	15.6	20.5	25.8	18.5

Performance Graph at 115V, 60Hz, 2.0HP Typical performance - Not guaranteed values





CD0320



	LINE A	LINE B	JOIN	JOIN
HIGH STD	1,8	4	2,3,5	J
HIGH OPP	1,5	4	2,3,8	J
LOW STD	1,3,8	4	-	2,J,5
LOW OPP	1,3,5	4	-	2,J,8

NOTES:

1. STANDARD ROTATION IS CCW FACING END OPPOSITE SHAFT EXTENSION.
2. MULTIPLE CAPACITORS ARE CONNECTED IN PARALLEL UNLESS OTHERWISE SPECIFIED.
3. LEAD COLORS ARE OPTIONAL. LEADS MUST ALWAYS BE NUMBERED AS SHOWN.

CD0320

REV. DESC: ADD INTERNAL CONNECTION TO HELP MANUFACTURING		
REV. LTR: G	VERSION: 01	TDR: 000000941594
FILE: \AAA\00007\422	REVISED: 02:21:00 08/28/2015	BY: ENALEMO
MTL: -	© □	

BALDOR

TYPE LC, DV, REV, THERMAL, B PH AMPS THRU HTR HVC, 7 LEAD

SH 1 of 1